

Connector

Header Connectors

ELECSOUND®

Material:

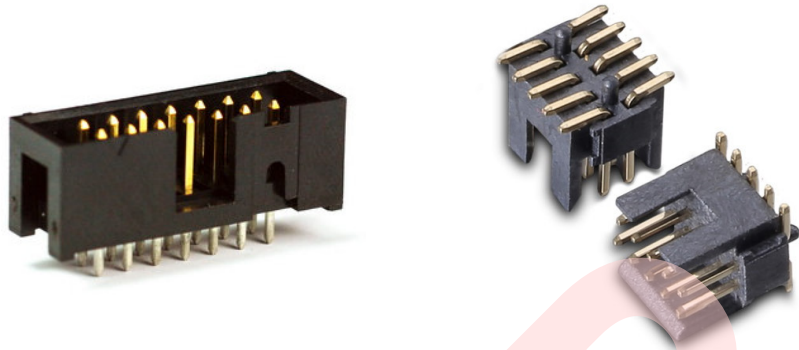
Housing: PA46 UL94V-0
 Colour : Black
 Terminal: Brass
 Plated: Gold Plated over Nickel

Electrical:

Current rating: 1Amp/Pin max
 Contact resistance: <20mΩ
 Insulation resistance: >1000M Ω, 500VDC
 Withstanding voltage: 500Vrms(1 min)

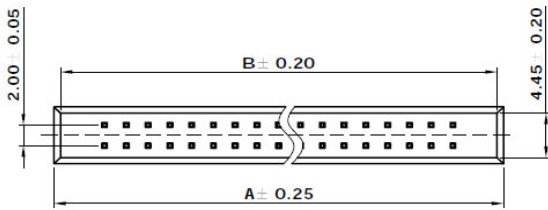
Mechanical:

Operating temperatures: -25°C to +125°C
 Preservation temperatures: -10°C to +40°C

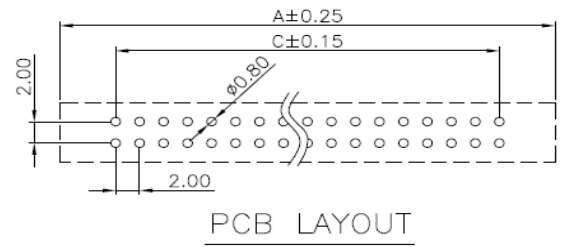
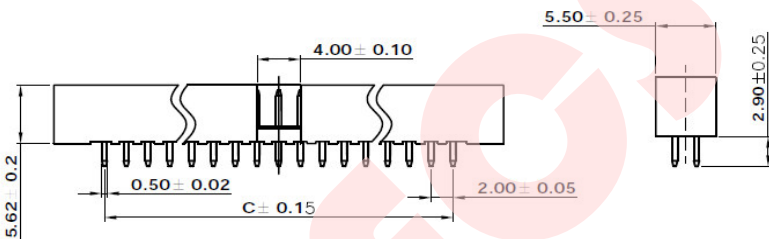


DIMENSIONS

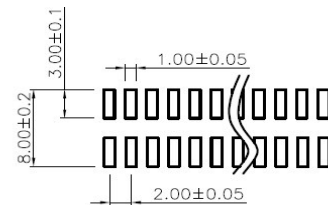
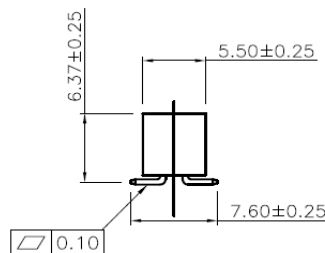
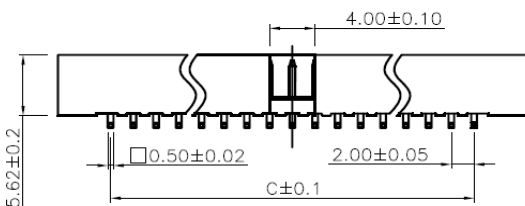
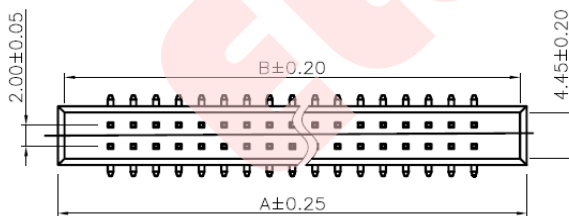
Straight Style - 2mm Through Hole Type



PIN	Dimm "A" ± 0.25	Dimm "B" ± 0.20	Dimm "C" ± 0.15
10	17.2	16.0	8.0
20	27.3	26.1	18.0
26	33.3	32.1	24.0
34	41.3	40.1	32.0

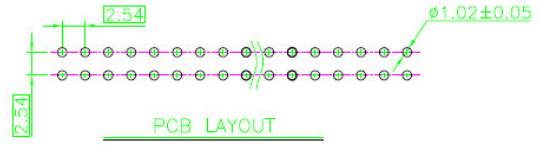
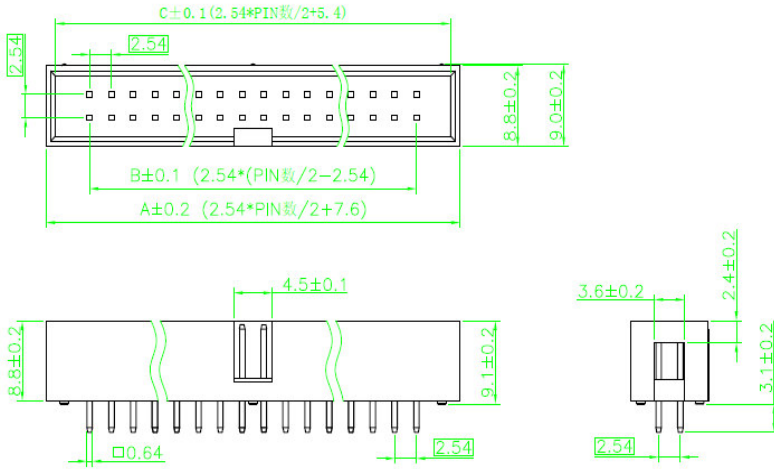


SMT Style - 2mm



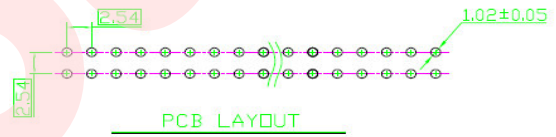
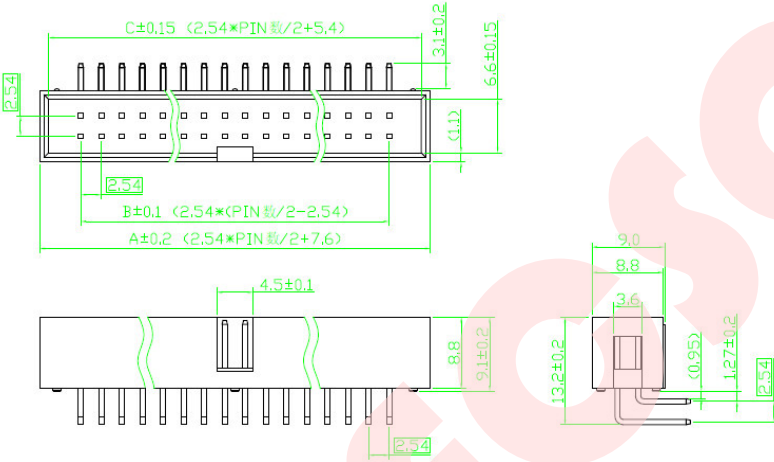
PIN数	尺寸A ± 0.20	尺寸B ± 0.25	尺寸C ± 0.15
10	17.2	16.0	8.0
20	27.3	26.1	18.0
26	33.3	32.1	24.0
34	41.3	40.1	32.0

Straight Style - 2.54mm



PIN	A±0.2	B±0.1	C±0.15	PIN	A±0.2	B±0.1	C±0.15
6	15.22	5.08	13.02	26	40.62	30.48	38.42
8	17.76	7.62	15.56	30	45.70	35.56	43.50
10	20.30	10.16	18.1	34	50.78	40.64	48.58
14	25.38	15.24	23.18	40	58.40	48.26	56.20
16	27.92	17.78	25.72	50	71.10	60.96	68.90
20	33.00	22.86	30.80	60	83.80	73.66	81.60
24	38.08	27.94	35.88	64	88.88	78.74	86.68

RIGHT ANGLE Style - 2.54mm



PIN	A±0.2	B±0.1	C±0.15	PIN	A±0.2	B±0.1	C±0.15
6	15.22	5.08	13.02	26	40.62	30.48	38.42
8	17.76	7.62	15.56	30	45.70	35.56	43.50
10	20.30	10.16	18.1	34	50.78	40.64	48.58
14	25.38	15.24	23.18	40	58.40	48.26	56.20
16	27.92	17.78	25.72	50	71.10	60.96	68.90
20	33.00	22.86	30.80	60	83.80	73.66	81.60
24	38.08	27.94	35.88	64	88.88	78.74	86.68